

Roband Grill Stations

This document is only for qualified technical personnel. It contains service information on the Roband range of Grill Stations series GSA-6 and GSA-8 and various combinations of these models. It is broken down into two sections, Section 1 covering the disconnection of the wires from the top plate and its removal. Section 2 shows how to access all the components within the control box as well as removing the counter balance springs and the bottom plate.

It is important that you read the complete information first so you have a clear understanding of the whole procedure then follow the steps in each section to perform the task required. It is important to perform the prescribed electrical safety tests at the end of every repair.

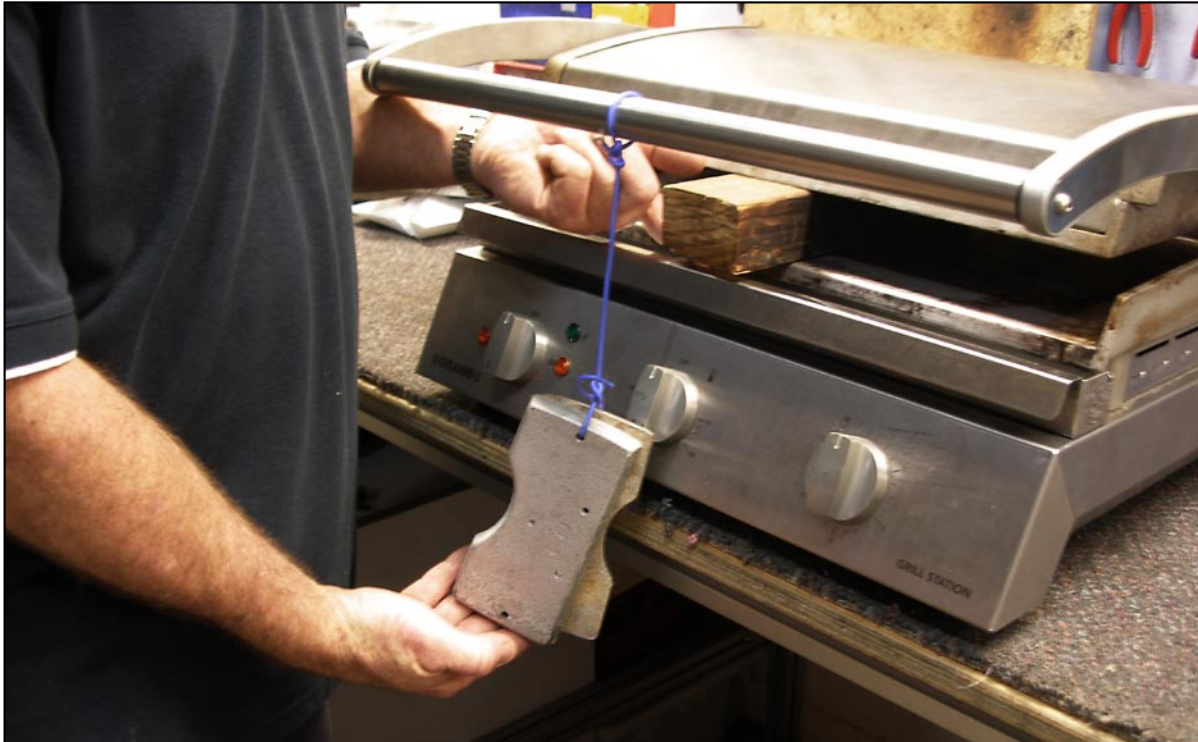
Tools required:

- Torx 20 & 25 screwdrivers
- Long nose pliers straight or angled
- Large flat screwdriver to lift lid
- Weight to hold down lid
- Loctite 243 medium strength for screws in front and rear handle bars
- Block to separate plates



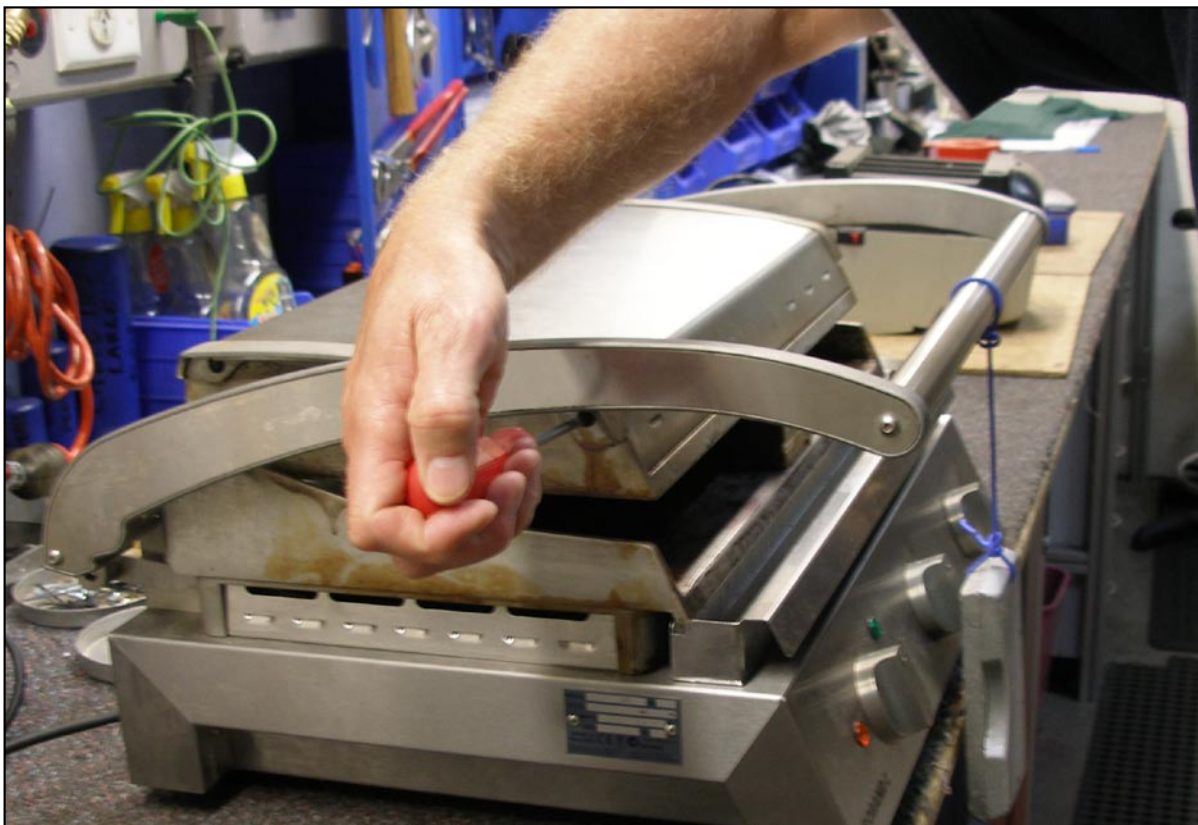
Section 1 This shows how to access the top cover and remove top plate.

1



Place one or two spacers approximately 45mm thick between the top and bottom plates. Then attach a counter weight of approximately 2kg to the machines handle to prevent the handle from springing open once the top plate is removed.

2



Having the spacer between the plates allows access to the screws holding the aluminium cover pieces for the stainless steel top. Remove the two screws from each side.

3



Loosen the screw in the front handle approximately 3 turns to reduce the tension on the top stainless steel cover.

4



Remove the top stainless steel cover; you may need to use a flat blade screwdriver to lightly tap the top cover retainers outwards which will allow separation to occur.

5



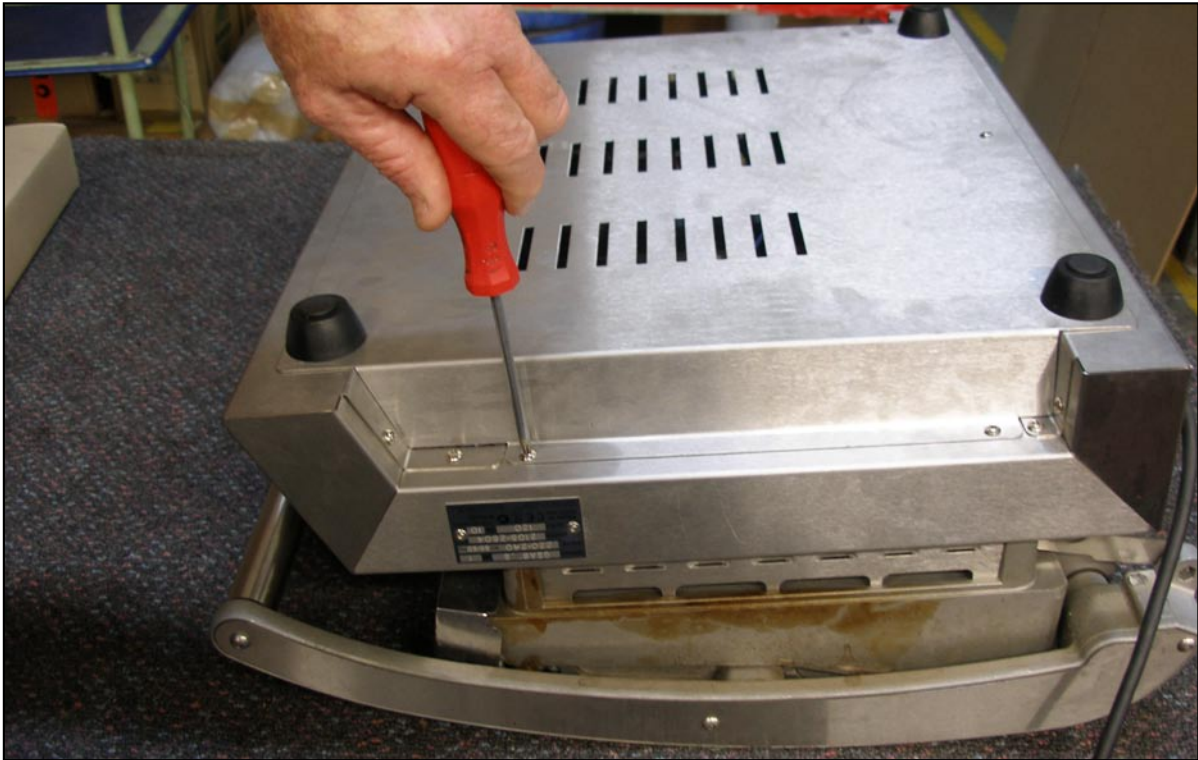
Unscrew the wires connected to the terminals of the element in the plate but ensure you hold the terminal with pliers to prevent it from twisting when doing so. Once this is completed the top plate can be removed by lifting the handle with the counter weight up approximately 50mm and sliding the plate forwards and off the spacer.

To re-assemble follow this procedure in reverse.

Section 2

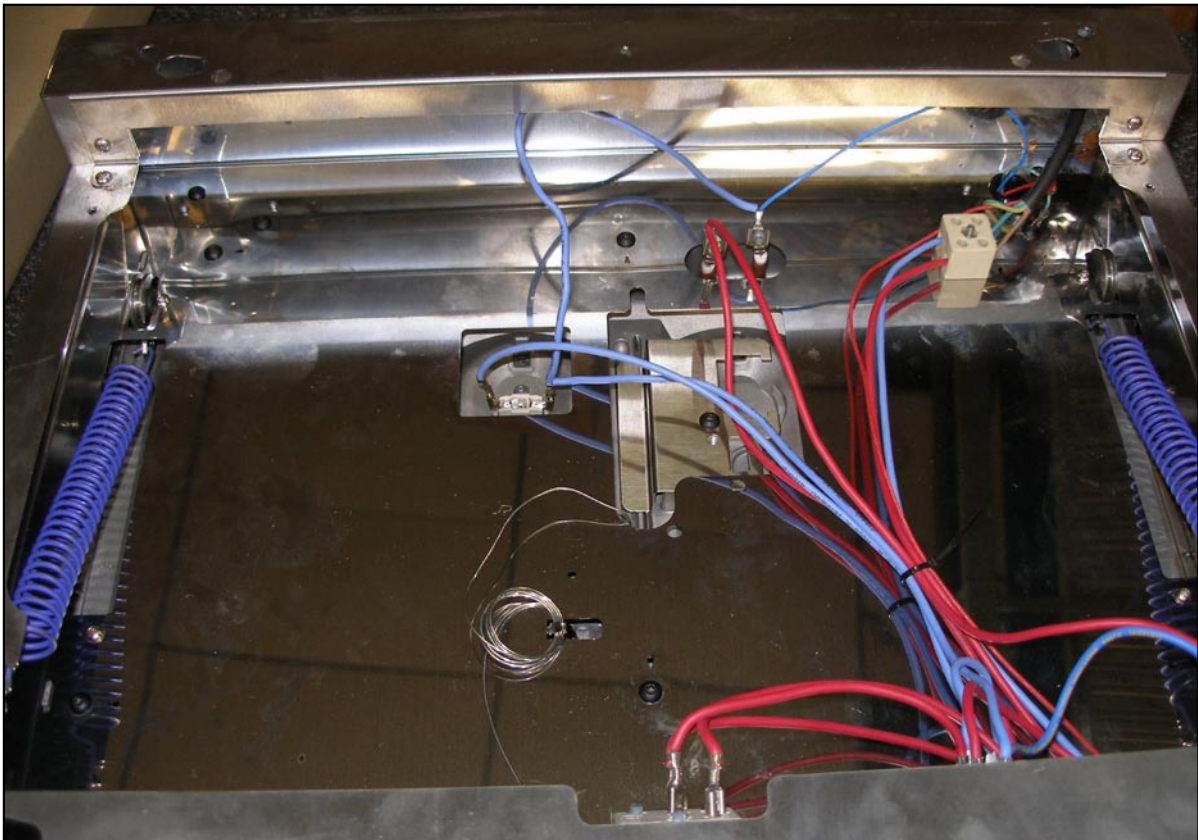
This section shows how to access the control box of the unit as well as the procedure for removing the bottom plate.

1



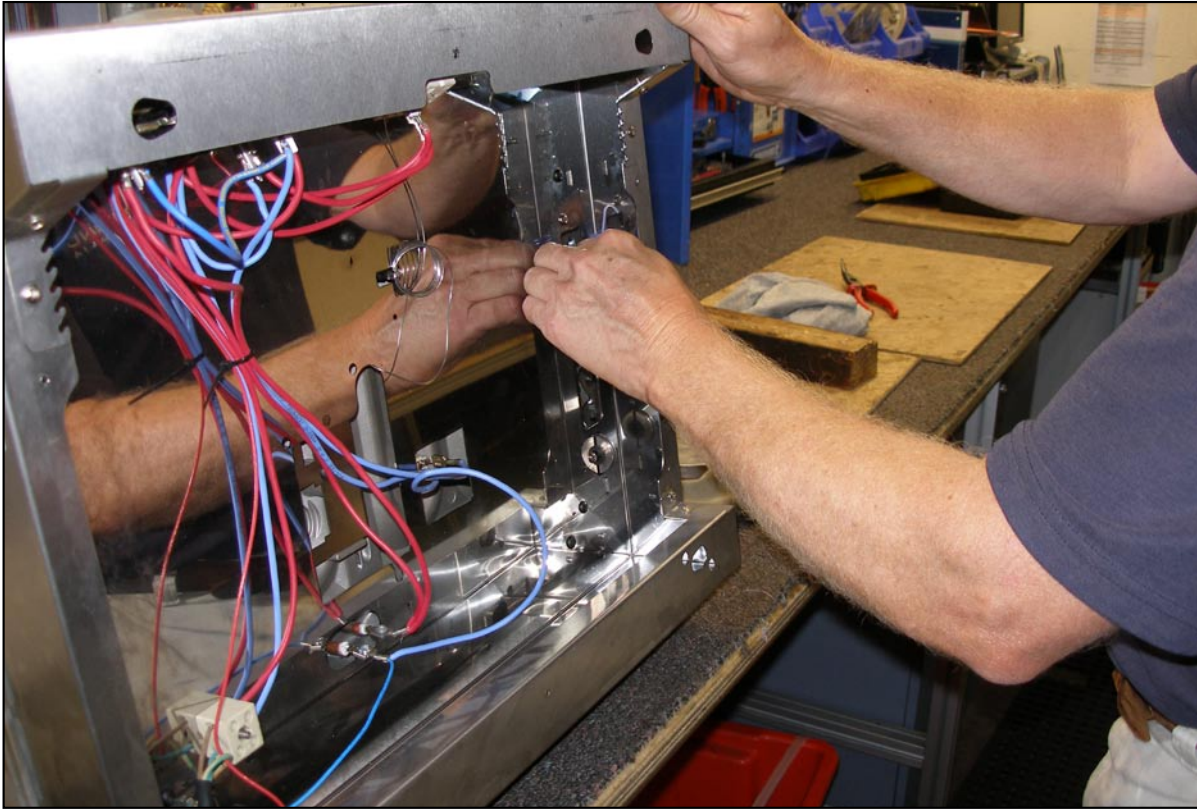
The machine should be placed in the upside down position allowing access to the bottom cover. Remove the six base screws; it is not necessary to remove any of the other screws on the underside.

2



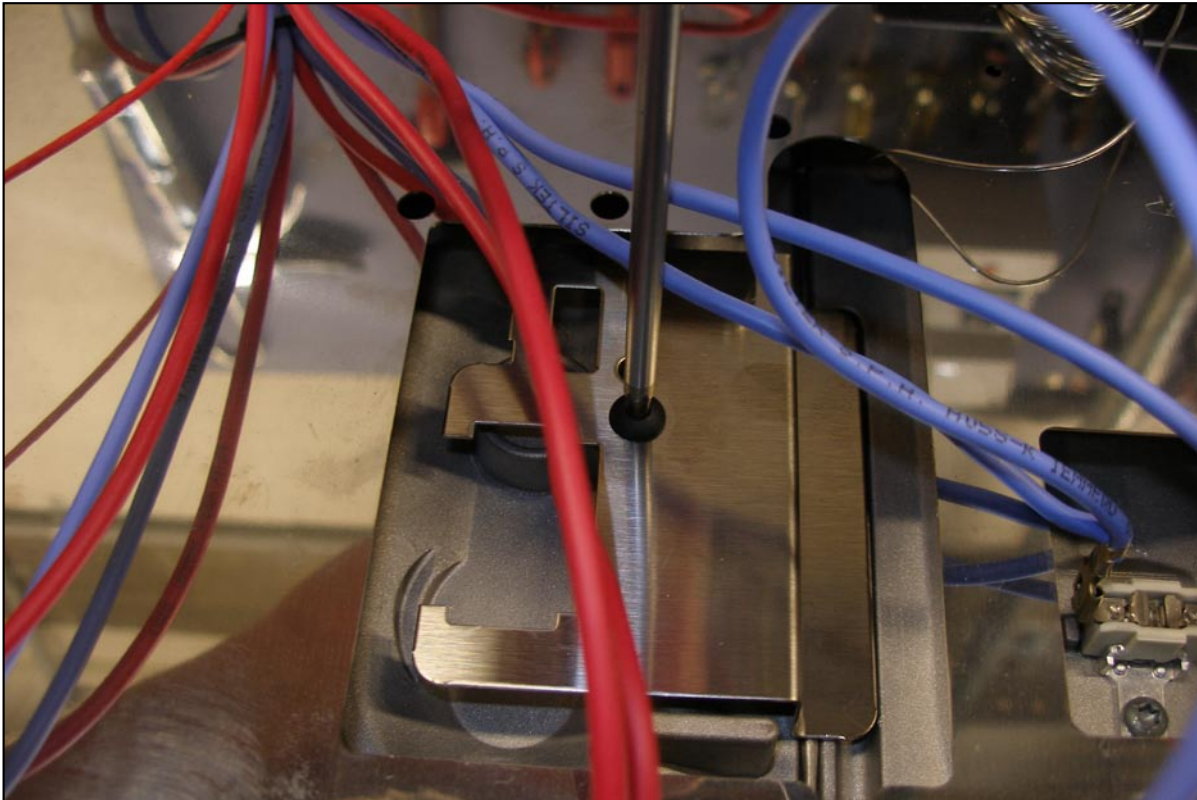
Once the base is removed you will have access to the wiring, mini-melt, thermostat, pilot lights, springs and cam.

3



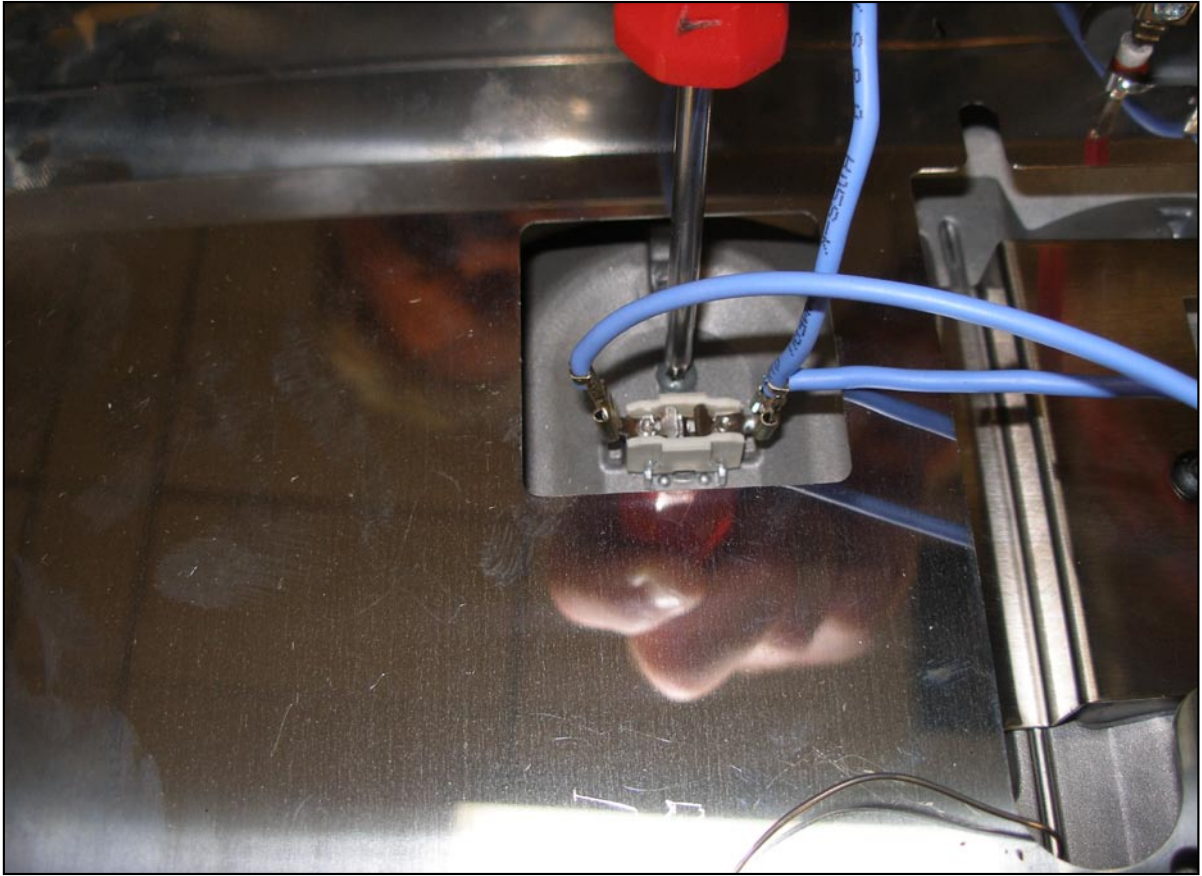
Reposition the machine so the control box is vertical and the top cover is resting on the bench. The top and bottom plates will be 90° apart which takes the tension off the springs. The springs will be hooked into the second notch. Remove the spring by gripping the body of the spring and applying upward force then unhook from the cam and remove completely. The machine should be placed in the upside down position allowing access to the inside of the control box.

4



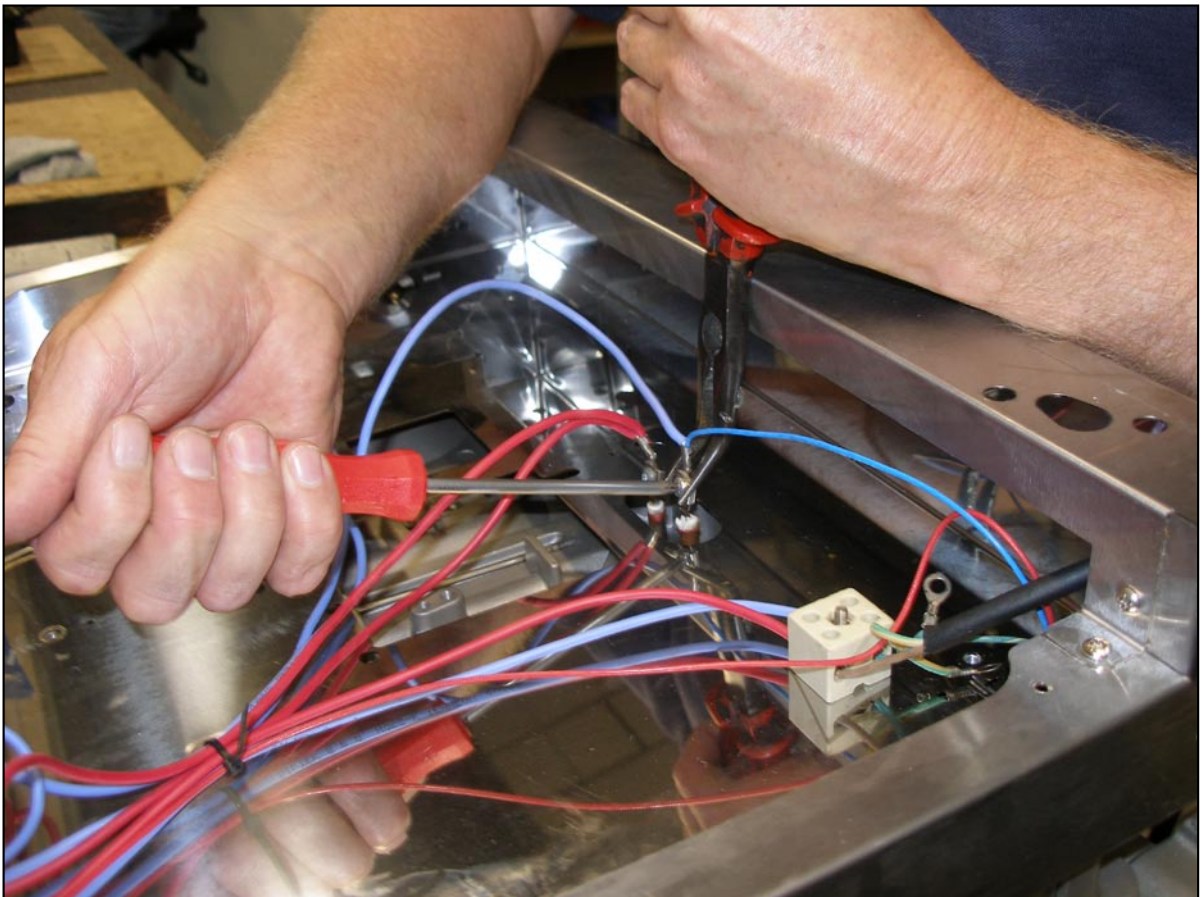
Remove the thermostat bulb clamp screw and position the bulb inside the control box away from the bottom plate.

5



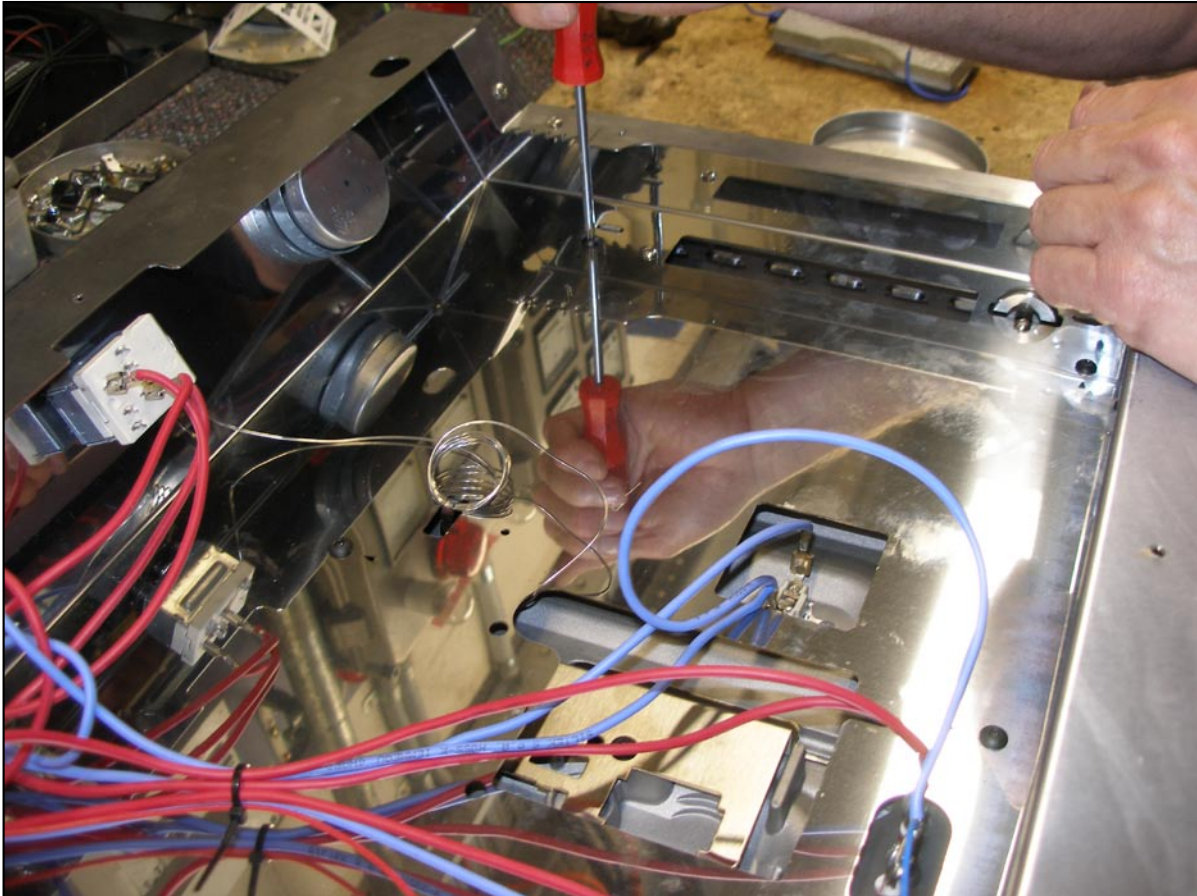
Undo one retaining screw which holds the mini melt in place and position inside the control box.

6



Remove the wires from the element terminal, by holding the terminal with pliers to prevent it from rotating and carefully undo the two screws.

7



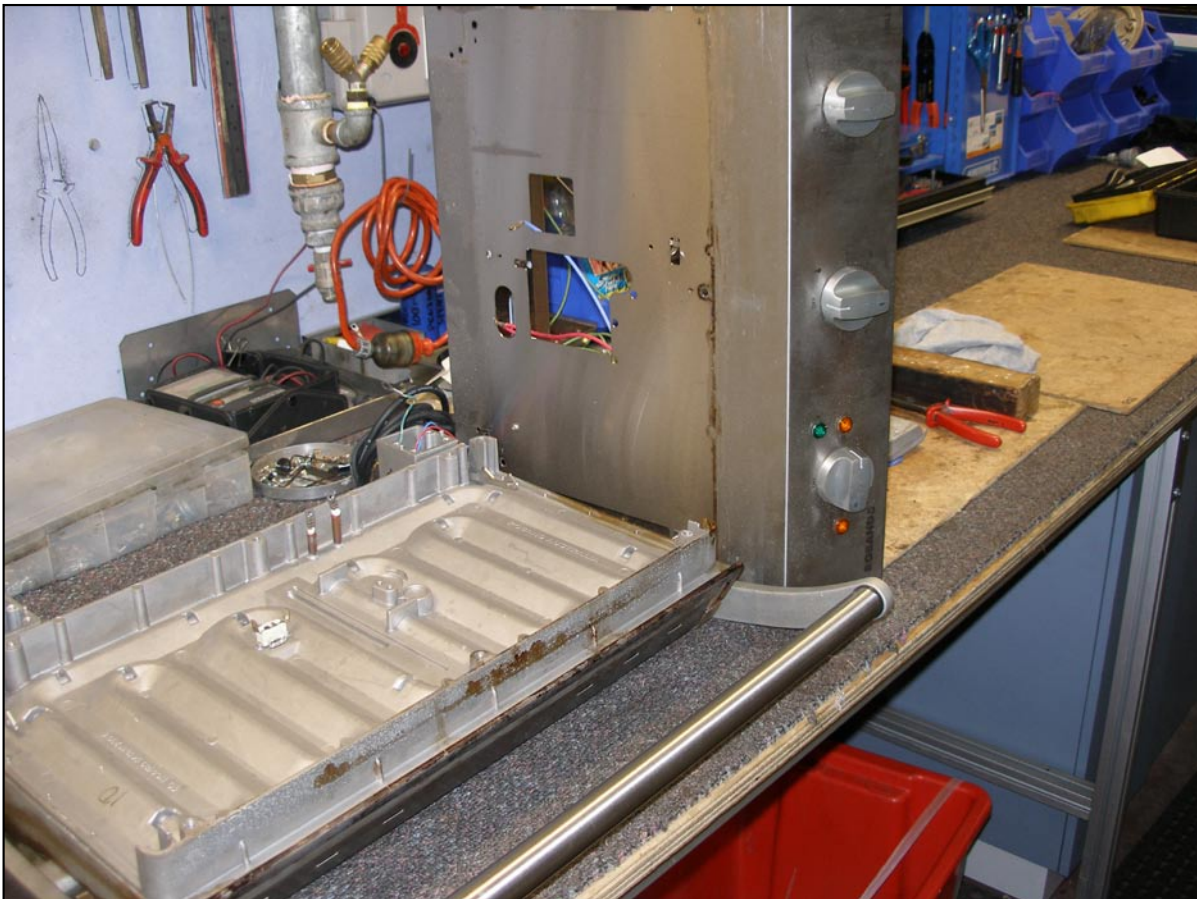
Remove 8 body screws and 1 earth screw.

8



Lift the stainless steel body gently.

9



Place the stainless steel body to the right of the plate on its end.

10



Grasp the bottom plate with both hands and manoeuvre it off past the two rear aluminium posts and the top plate.

11



After removing the bottom plate you will be left with the top plate connected to the side handles and the bush mounting blocks on the bench.

To re-assemble follow this procedure in reverse.