



SAFETY AND OPERATING INSTRUCTIONS

AIR POWERED CAN CRUSHER CA-3000

M111 REV. C



⚠ WARNING

READ AND UNDERSTAND THIS MANUAL AND ALL INSTRUCTIONS
BEFORE OPERATING THIS OPENER.

INTRODUCING THE EDLUND CA-3000 CAN CRUSHER

This manual will help you set up and safely operate your new Edlund CAN CRUSHER. Careful adherence to the safety and operating instructions in this manual will ensure many years of productive use.

Please let us know of any questions you may have. To expedite your call, please have your serial number and/or order number handy. For technical assistance, please call Toll-Free 1-800-772-2126 and one of our Technical Support Representatives will be happy to help you.

Conventions used in this manual

WARNING (ORANGE)

THIS INDICATES A POTENTIALLY HAZARDOUS SITUATION, WHICH, IF NOT AVOIDED, COULD RESULT IN DEATH OR SERIOUS INJURY.

CAUTION (YELLOW)

THIS INDICATES A POTENTIALLY HAZARDOUS SITUATION, WHICH, IF NOT AVOIDED, MAY RESULT IN MINOR OR MODERATE INJURY.

NOTICE!


THIS INFORMATION IS IMPORTANT IN THE PROPER USE OF YOUR OPENER. FAILURE TO FOLLOW THIS INSTRUCTION COULD RESULT IN DAMAGE TO YOUR OPENER.

Tip: This is a helpful hint to guide you in getting the most out of your Edlund CROWN PUNCH CAN OPENER.

Tools Needed: This indicates you will need a specific tool to perform a maintenance function on your Edlund CROWN PUNCH CAN OPENER.

NOTE: The information in these labels may be helpful to you.



MODEL CA-3000(T) CAN CRUSHER
PRESSURE=4CFM@85 PSIG MIN. 
(10.5 kg/cm² @ 0.6 MPa)
EDLUND CO. INC. PH# 802-862-9661
MADE IN U. S. A. 01/07
SERIAL NO. _____ L231

Installation: Install the extension chute with the two 1/4-20 x 3/8 hex screws, lock washers and flat washers. Position the unit on a tabletop where it will be easy to put a trash container under the chute. The air pressure requirements are minimum of 85 PSI, maximum 150 PSI. Continuous operation of 10 crushing cycles/minute will consume 8 to 10 CFM @ 85 PSI, requiring at least a 3 HP continuous duty compressor. **Filtered and dry air, without lubrication is recommended.** A quick disconnect is supplied.

Operation:

1. With air line attached, open the door and place the can in the opening with the opened end towards the chute.
2. Close the door. It should stay closed by itself and the can will be crushed and drop out the chute. Wait until the crushing ram returns (about 2 seconds after the crushed can falls out) before opening the door. If the door is opened, all air pressure is dumped. If the door is opened too soon, you will have to close the door, which will restart the crushing cycle, and you will have to wait for the cycle to complete to open the door and put in another can.

Troubleshooting

Possible Cause

- | | |
|--|---|
| 1. With air connected and door closed unit will not operate. | <ol style="list-style-type: none">a. Pin on door not actuating V008 valve. Adjust or replace.b. V025 pulse valve faulty. Check output and replace if necessary.c. V047 pressure sensor valve leaking by or not resetting. Adjust with a gauge or replace.d. V048 valve sticking or leaking by. Lubricate or replace.e. Cylinder sticking. Lubricate, repair or replace.f. Chute extension interlock not actuating. Replace valve if necessary. |
| 2. Can crushes but cylinder will not return. | <ol style="list-style-type: none">a. Insufficient air pressure (less than 85 PSI). Adjust output of compressor.b. V047 pressure sensing valve has no output and needs adjusting or replacement.c. V025 pulse valve leaking by. Replace end plug if leaking or replace valve.d. V048 valve sticking. Lubricate or replace.e. Cylinder sticking. Lubricate, repair or replace. |
| 3. Air leakage | <ol style="list-style-type: none">a. Loose hoses or fittings. Tighten or seal threads.b. Worn cylinder or valve seals. Repair or replace. |

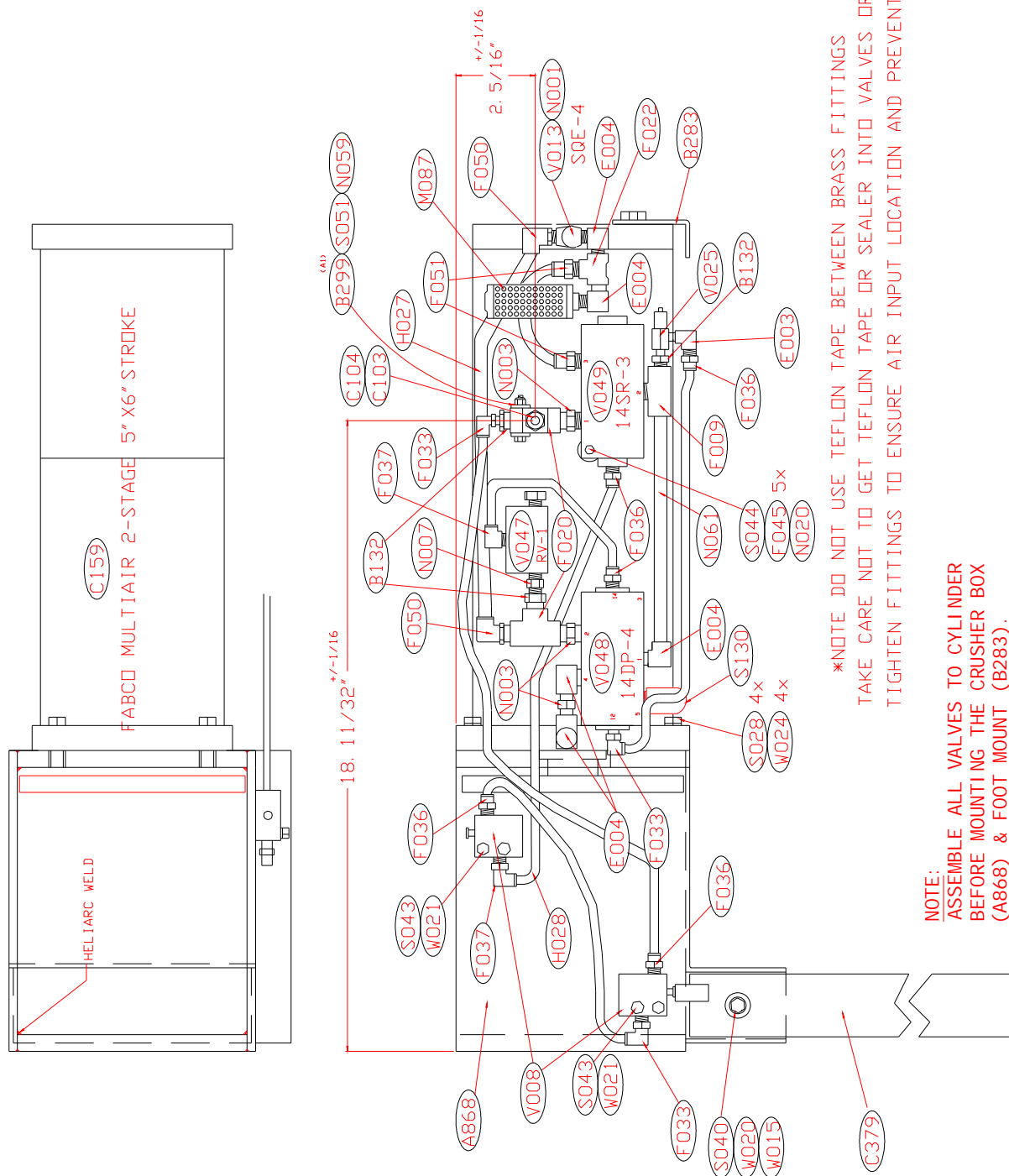
**Parts List CA-3000 Air Powered Can Crusher**

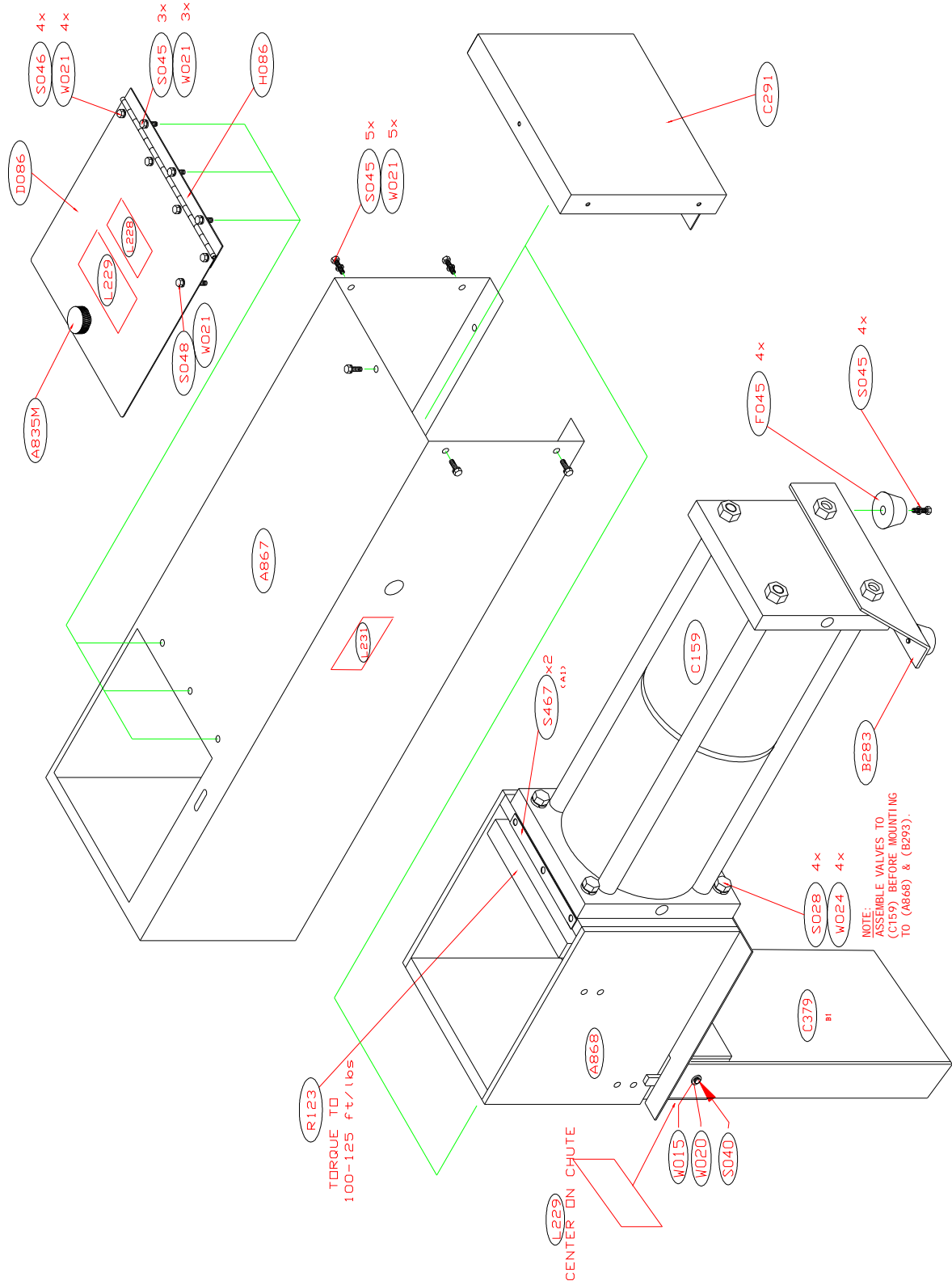
<u>Item</u>	<u>Description</u>
A835M	ASSEMBLY, CH-5000 KNOB W/SCREW CUTOFF
A867	WELDMENT, CA-3000 COVER
A868	WELDMENT, CA-3000 CRUSHER BOX
B132	BUSHING, REDUCTION, 1/4 TO 1/8 NPT
B283	BRACKET, CA-3000 CYLINDER FOOT PAD
C103	COUPLING, AIR, #210-3003, 1/4" NPT MALE
C104	COUPLING, #210-3003, 1/4" FEMALE
C159	CYLINDER, MULTIPower #MP5X6-2-1FF
C291	COVER, CA-3000 REMOVABLE END
C379	CHUTE, CA-3000 EXTENSION
D086	DOOR, CA-3000 S/S
E003	ELBOW, 1/8 NPT BRASS
E004	ELBOW, 1/4 NPT BRASS STREET
F009	FITTING, 1/4 NPT BRANCH T BRASS
F020	FITTING, 1/4 NPT BRASS TEE
F033	FITTING, SHORT 1/4" OD PUSH-IN 90 DEG. SW
F036	FITTING, 1/4" OD PUSH-IN TO 1/8 NPT MALE
F037	FITTING, 90 DEG. 1/4"OD PUSH-IN TO 1/8" P
F045	FOOT, #625 MECH., BLACK
F050	FITTING, 3/8" OD PUSH-IN ELBOW TO 1/4 NPT
F051	FITTING, 3/8" OD PUSH-IN TO 1/4 NPT MALE
H027	HOSE, 3/8" OD CLEAR
H028	HOSE, 1/4" OD CLEAR
H086	HINGE, CA-3000 DOOR
L228	LABEL, READ MANUAL
L229	LABEL, CRUSH HAZARD
L231	LABEL, RATING/SERIAL #
M087	MUFFLER, 1/4" NPT CANNISTER 1.7/8" D.X4"
N001	NIPPLE, 1/4 NPT X 1" HEX HI PRES. STEEL
N003	NIPPLE, 1/4 NPT HEX
N005	NIPPLE, 1/4 NPT CLOSE
N007	NIPPLE, 1/8 NPT HEX
N061	NIPPLE, 1/4" NPT BRASS X 6" LONG
R123	RAM, CA-3000 W/WELDED 3/4-16 STUD
S027	SCREW, 1/2-13 X 1-1/2 S/S HH
S040	SCREW, 1/4-20 X 3/8 S/S HEX
S043	SCREW, 10-32 X 1 S/S HEX HEAD
S045	SCREW, 10-32 X 1/2 S/S HEX HEAD
S046	SCREW, 10-32 X 1/4 S/S HEX HEAD
S048	SCREW, 10-32 X 3/4 S/S HEX HEAD
S051	SCREW, 10-32 X 1-1/2 SHC S/S
S130	SILENCER, 1/4"
V013	VALVE, 1/4" QUICK EXHAUST
V008	VALVE, 3 WAYS
V025	VALVE, PULSE
V047	VALVE, AIR PRESSURE SENSING
V048	VALVE, 4-WAY DBL. AIR PILOT
V049	VALVE, 3-WAY DBL. AIR PILOT
W015	WASHER, 1/4" S/S FLAT
W020	WASHER, 1/4" S/S LOCK
W021	WASHER, #10 S/S LOCK

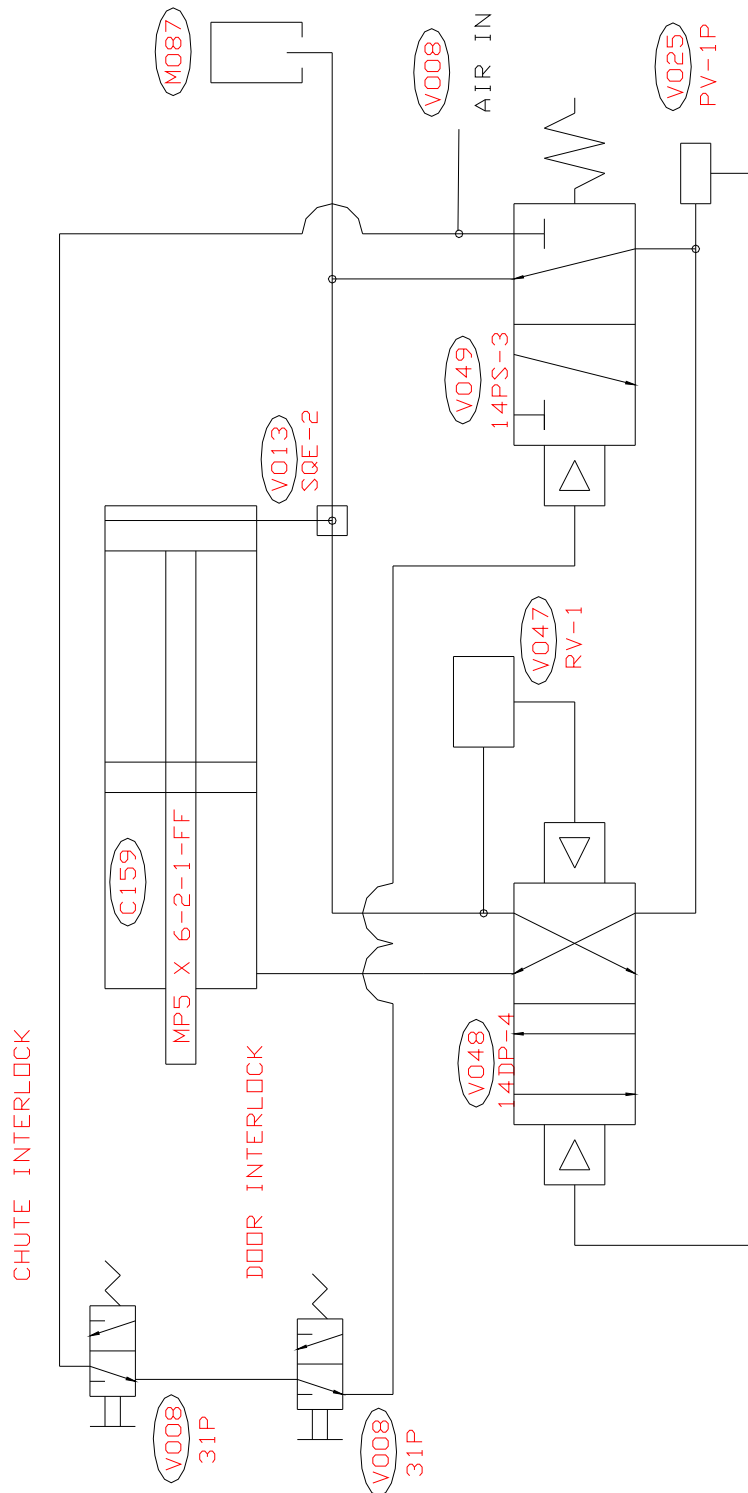
Etlund Company, Inc., 159 Industrial Parkway, Burlington, VT 05401 802-862-9661

W024

WASHER, 1/2" S/S LOCK







SCHEMATIC, CA-3000