



Products for Foodservice

M094 REV. D

Edlund Company, Inc., 159 Industrial Parkway, Burlington, VT 05401 802-862-9661

PRODUCT MANUAL- M094

MODEL 395

ELECTRIC KNIFE SHARPENER

Please read thoroughly before operation and keep for future reference

Model 395 Knife Sharpener Specifications

Model No.	#395
Power Requirements	115 volt, 1.5 Amps, 50 -- 60 HZ. 230 volt, 0.75Amps, 50-60 HZ
Speed	1550 RPM
Size	4" D x 4 3/4" H x 9 3/4" W (102mm x 121mm x 248mm)
Weight	8.9 lbs. (4.0 kg.)

1. Knife Sharpener Description

The Edlund Company Inc manufactures the Model 395 knife sharpener. It is approved by the appropriate certifying organizations. The knife sharpener uses a 3-inch diameter by one-inch wide grinding wheel to sharpen knives and other utensils. The sharpener consists of a grinding wheel, which is mounted on an arbor and attached to a drive motor. The motor is mounted to a nickel-plated steel base using motor mounting plates. The sharpener is enclosed in a stainless steel housing with a plastic knife guide assembly secured to the base with screws.

2. Knife Sharpener Operation

To operate, plug the power cord into a grounded outlet with the same voltage as listed on the bottom of the knife sharpener base. Turn the unit on using the rocker switch and then use the following steps.

1. Sanitize your hands and knife prior to sharpening.
2. Hold knife against the outside edge of the left slot.
Warning! Hold knife firmly so that it will not be pulled away by the rotation of the grinding wheel.
3. Pull the knife through keeping pressure on the wheel light and even.
4. Hold the knife against the outside edge of the right slot and pull through
5. Repeat steps 2-4 using the outside edge of the left and right slot.
6. Sanitize knife and hands.

Initial sharpening of knives may require several passes to create the correct angle of the knife. Subsequent sharpening will only require a few passes to achieve a sharp, long lasting knife-edge. Sharpener is for intermittent use only. Use for 15 minutes and turn off motor to cool for ten minutes.

3. Cleaning Instructions

Warnings! *Never clean or maintain knife sharpener without unplugging it from the electric source.*

Never submerge or place knife sharpener in water.

Never blow out unit using and air gun- metal may blow inside of the motor and damage it.

The knife sharpener must be cleaned after each use. Unplug the unit from the power source and gently shake out the accumulated grinding dust from the inside into a waste receptacle. Wipe the exterior and the knife guide using a damp cloth.

4. Maintenance Instructions

The grinding stone is designed to last up to several years based on normal use. The grinding stone is worn and needs replacing when the knife no longer makes contact with the wheel while positioned against the plastic knife guide. A replacement stone and arbor can be ordered from your local Edlund dealer as part number #A526. To replace the grinding stone, first unplug the unit from the power source. Remove the knife guide by removing the four screws and washers that secure the knife guide to the base. Loosen the setscrew that secures the grinding stone assembly to the motor shaft until you are able to slide the stone and arbor off of the motor shaft. Replace with the new stone and arbor. Center the grinding stone so that an equal portion of the stone is visible when the knife guide is in place. Tighten the setscrew. Replace the knife guide and the screws and washers. The knife sharpener is now ready for use. For all other problems consult the following chart

Trouble Shooting Guide

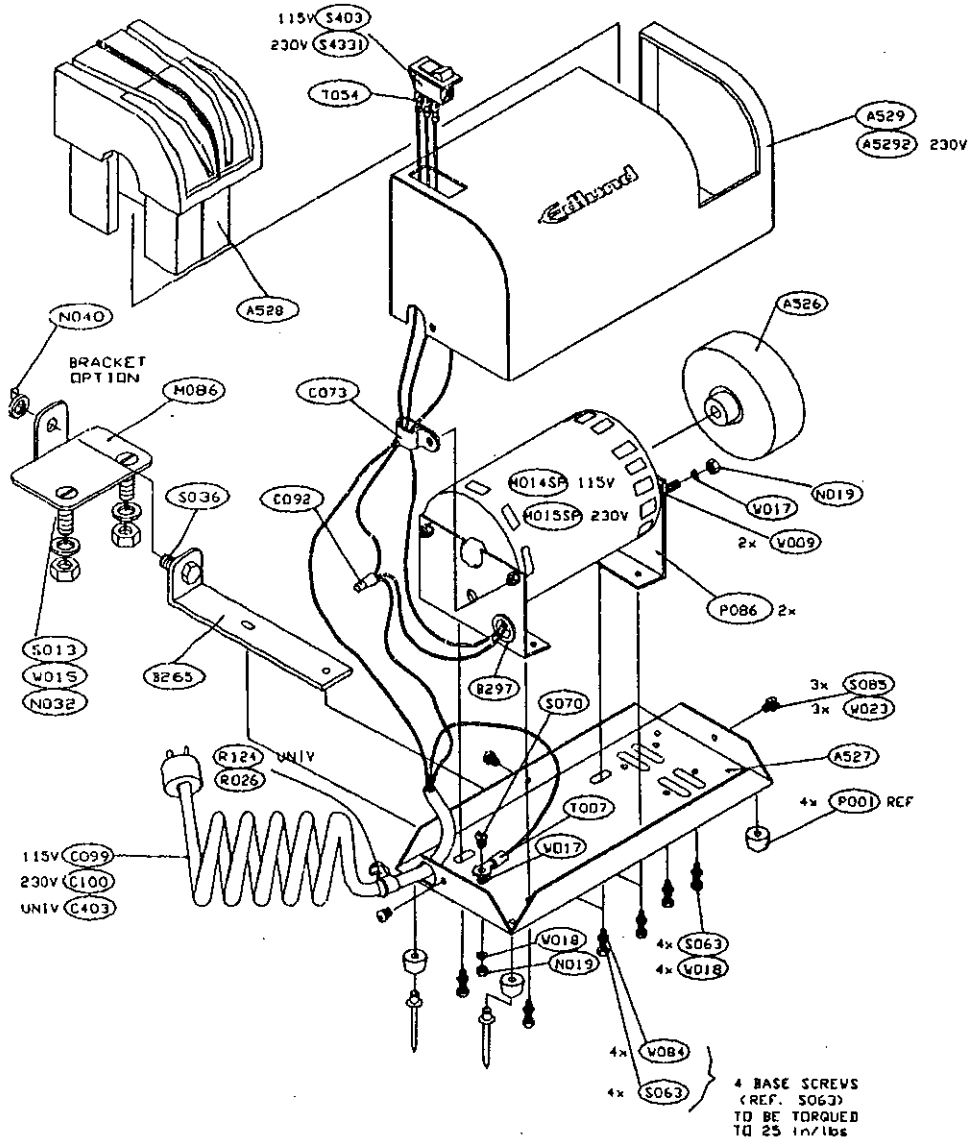
Use an Edlund authorized service technician should do all repairs.
Call the Factory or Authorized dealer for more information

Problem	Cause	Correction
I. Knife sharpener will not start.	1. Cordset not plugged into outlet.	1. Plug cordset into outlet with same voltage as listed on rating label.
	2. Broken wire in cordset	2. Unplug cordset. Check continuity of each wire and replace as required.
	3. Broken wires or loose terminal.	3. Check for loose wires, check continuity of internal wires and replace or repair as required.
	4. Motor overheated	4. Let motor cool down (15 mins+)
	5. Motor failure.	5. Replace motor.
II. Motor hums when switch is actuated.	1. Grinding wheel is contacting knife guide.	1. Check to see if wheel is contacting knife guide. Realign wheel using procedure listed in assembly procedure.
	2. Motor fan has become loose and is contacting motor stator.	2. Replace motor.
	3. Grinding wheel loose on motor shaft.	3. Remove knife guide. Check for loose wheel on arbor or loose arbor on motor shaft. Tighten to appropriate torque. Reassemble and align grinding wheel.
III. Knife not contacting grinding wheel when placed against knife guide.	1. Worn grinding wheel.	1. Replace grinding wheel using grinding wheel replacement procedure.
IV. Grinding wheel wobbles badly when sharpener is turned on.	1. Motor drive shaft may be bent.	1. Replace motor.



Products for Foodservice

Edlund Company, Inc., 159 Industrial Parkway, Burlington, VT 05401 802-862-9661



Warranties: The Edlund Company warrants these products to be free from defects in material and workmanship for a period of one year from date of purchase. The company's obligation under this warranty is limited to repairing or replacing without charge any parts or parts found to be defective under normal use. It is the responsibility of the purchaser to return the entire unit to the factory or a factory service branch, transportation charges prepaid. This warranty does not cover parts that must be replaced under normal use, including knives and drive gears on can openers. The company authorizes no other warranty, written or verbal. Carrier is responsible for merchandise in transit to you.

PART #	DESCRIPTION	PART #	DESCRIPTION
A526SP	ASSEMBLY, #395 GRINDING WHEEL	R026	RELIEF, ELECTRIC STRAIN
A527	ASSEMBLY, #395 BASE	R042	RIVET, AB 32A
A528	ASSEMBLY, #395 PLASTIC KNIFE GUIDE	R046	RIVET, SD56BS
A529	WELDMENT, #395 COVER	R124	RELIEF, BELL MOUTHED STRAIN #SR6P-5 BLK
A5292	ASSEMBLY, #395 230V COVER	S013	SCREW, 1/4-20 X 1 FH SLOTTED S/S
B265	BRACKET, #395B BASE LOCK	S022	SCREW, 1/4-20 X 3 FL 40 S/S
B297	BUSHING, 1/20 SNAP, 3/8Ø ID HEYCO #SB 500-6	S036	SCREW, 1/4-20 X 1/2 S/S HEX HEAD
C073	CLAMP, #201/#395 CABLE HEYCO #3324	S063	SCREW, 10-32 X 3/8 PLTD RH CAP SCREW
C092	CONNECTOR, #390/#395/CH-5000 LEAD	S070	SCREW, 10-32 X 5/16 PLATED RHM
C099	CORD SET, REGULAR 7Ø, 18/3, GRAY	S085	SCREW, 8-32 X 1/4 S/S RHM
C100	CORD SET, 230V 18/3X7', GRAY W/6-15P PLUG	S403	SWITCH, CH-5000/#350/#395 USA LIGHTED ROCKER
C403	CORD, UNIVERSAL MALE C13 PIGTAIL 18"	S4331	SWITCH, GREEN LIGHTED 230V.ROCKER 2 POLE
I004	INSULATOR, MICRO SWITCH PAD	T007	TERMINAL, ROUND TONGUE
L125	LABEL, CAUTION...INT. DUTY	T031	TUBE, 1/4" SHRINK INSULATION 3/4" LONG
M014SP	MOTOR, #395 115V SPARE PART	T054	TERMINAL, 1/4" FEMALE FULLY INS 22-18 GA
M015SP	MOTOR, #395 230V SPARE PART	W009	WASHER, #10 PLATED FLAT
M086	MOUNT, TABLE LOCK	W016	WASHER, 1/4Ø S/S FLAT
M094	MANUAL, #395KS SPEC'S.&INSTR.	W017	WASHER, #10 EXT. TOOTH LOCK, PTD
N019	NUT, 10-32 PLATED HEX	W018	WASHER, #10 3/16 PLATED LOCK
N032	NUT, 1/4-20 NYLOCK	W019	WASHER, #4 TOOTH LOCK
N040	NUT, 4-20 WING S/S	W023	WASHER, 3/8 S/S LOCK
P001	PAD, #266/#203/#395 FOOT	W084	WASHER, #10 SERRATED PLATED
P086	PLATE, 395 MOTOR		
P187	PLATE, CE MARK		